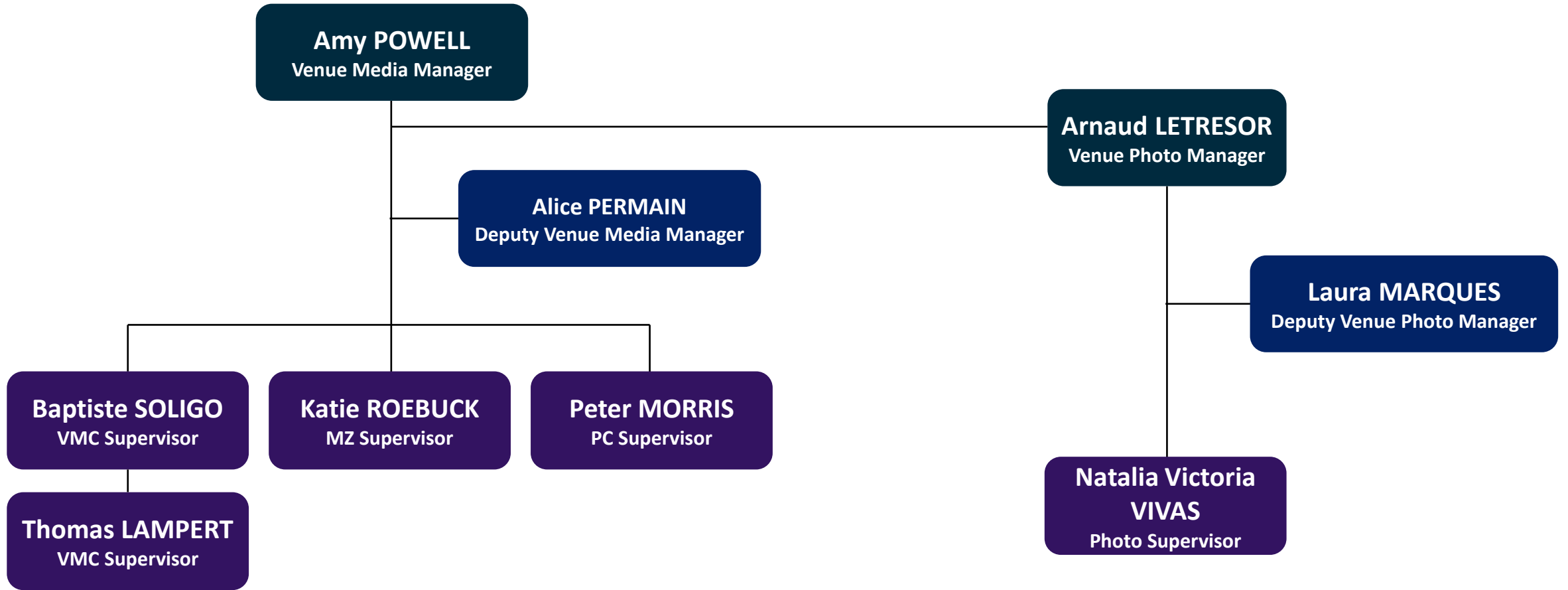


OLY - VERSAILLES

MODERN PENTATHLON / EQUESTRIAN

PARIS2024



PARA - VER – VERSAILLES

PARA EQUESTRIAN

PARIS2024



PUBLIC TRANSPORT APPROACH

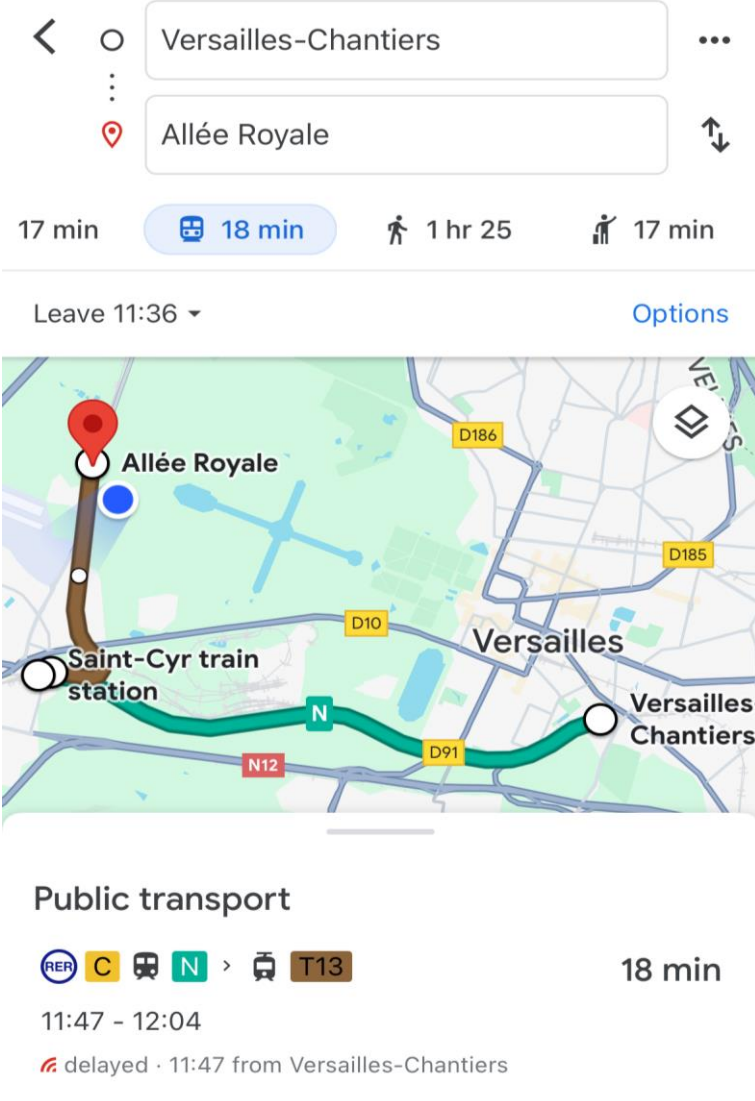
The closest public transport station is Allee Royal tram stop on T13.

Access is from Saint-Cyr train station. Exit the station and turn immediately right. The tram stop is along the road and directly in front of you (signage is difficult to see).

It is not going to be an entry route for the public, only workforce and accredited attendees – including media.

The tram ride is 5 minutes (roughly) to Allee Royal.

It is then a short walk to the accredited PSA and from there, a few hundred metres to the VMC.



The screenshot shows a Google Maps search interface. The starting point is Versailles-Chantiers and the destination is Allée Royale. The estimated travel time is 18 minutes. The route is shown on a map, starting from Saint-Cyr train station, going south on N12, then east on D91, and finally north on D10 to Allée Royale. The public transport route is highlighted in green. Below the map, the public transport details are shown: RER C, N, and T13, with a total travel time of 18 minutes. The departure time is 11:47 and the arrival time is 12:04. A note indicates the route is delayed, starting at 11:47 from Versailles-Chantiers.

Versailles-Chantiers

Allée Royale

17 min 18 min 1 hr 25 17 min

Leave 11:36 Options

Allée Royale

Saint-Cyr train station

Versailles

Versailles-Chantiers

Public transport

18 min

11:47 - 12:04

delayed · 11:47 from Versailles-Chantiers

IAEJ QUESTIONS

Is there an entrance for journalists at the tram/bus stop "Allée Royale"?

Not specifically for media, but it is set to remain open.

Can you also drive up there with an Uber/taxi?

Not unless they have a pass to access the restricted areas.

Are large monitors (24-27 inch) allowed in the press centre a) and b) can they be left overnight?

No, they are not permitted.

When can we access the XC course?

25th July

How do we get from the media hotel to the venue?

We are not familiar with all media hotels, this needs to be taken up with the Paris 2024 transport team.

IAEJ QUESTIONS

How do we access the arena?

Media will be shown directions when they arrive.

Are there lockers for photographers?

Of course.

Are the photography positions fixed or can we move?

Usual rules apply, wait for a break in competition.

Where do we pick up photo vests?

MPC, as always. This is also where tools of the trade are stickered

Is there a mixed zone?

Of course. Directions will be provided when media arrive.

IAEJ QUESTIONS

How do we book interviews?

Through the NOC press attaché

Are there press conferences?

As always, there is a press conference after medal ceremonies only.

PRESS CONFERENCE SCHEDULE

VENUE	SPORT	SPORT NAME	RELATED EVENT	PCR DATE
VER	EQU	Equestrian	Eventing Team	29 July 2024
VER	EQU	Equestrian	Eventing Individual	29 July 2024
VER	EQU	Equestrian	Jumping Team	02 August 2024
VER	EQU	Equestrian	Dressage Team	03 August 2024
VER	EQU	Equestrian	Dressage Individual	04 August 2024
VER	EQU	Equestrian	Jumping Individual	06 August 2024
VER	MPN	Modern Pentathlon	Men	10 August 2024
VER	MPN	Modern Pentathlon	Women	11 August 2024

Can we bring in selfie sticks?

No.

IAEJ QUESTIONS

If an NOC requests to close a session, is the entire session closed or just their time slot?

Arena familiarisation sessions will not be closed, so this will not impact media. Given the layout of the warmup arenas, media will have access to 2 x sides of the final warmup area and 1 side of the covered training area behind this. As such, closed sessions should not be an issue for us.

Can we book tours of the stables?

According to the FEI rules: On a case-by-case basis, the FEI may grant exceptions for unique access at agreed/set times and under the supervision of an FEI Steward and member of the OC/FEI Media Operations team. Such permission shall only be granted by the FEI Veterinary Delegate/FEI Veterinary Directorate who shall have the right to refuse any such request. All requests must either come through the Venue Media Manager or to the FEI Communications team.

Requests will only be considered for the following:

- Media engaged by National Federations (for national promotional content of their teams/athletes)
- Organising Committee media team (for event promotional content)
- FEI digital/media team (for event/sport promotional content)
- Other media engaged by Organising Committee and/or FEI (for event/sport promotional content)
- Exceptional television/broadcast requests